

# Transformation Learning Zones

Overview of Ministeries White Paper

**THINK Learning Studio**



**"The world of education is constantly evolving, and the traditional approach to learning is no longer adequate in preparing students for the complex and dynamic world they will face in the future.**

**The THINK Learning Studio believes in the power of real-world learning experiences to empower students and help them develop the skills, knowledge, and mindset they need to make a positive impact in the world.**

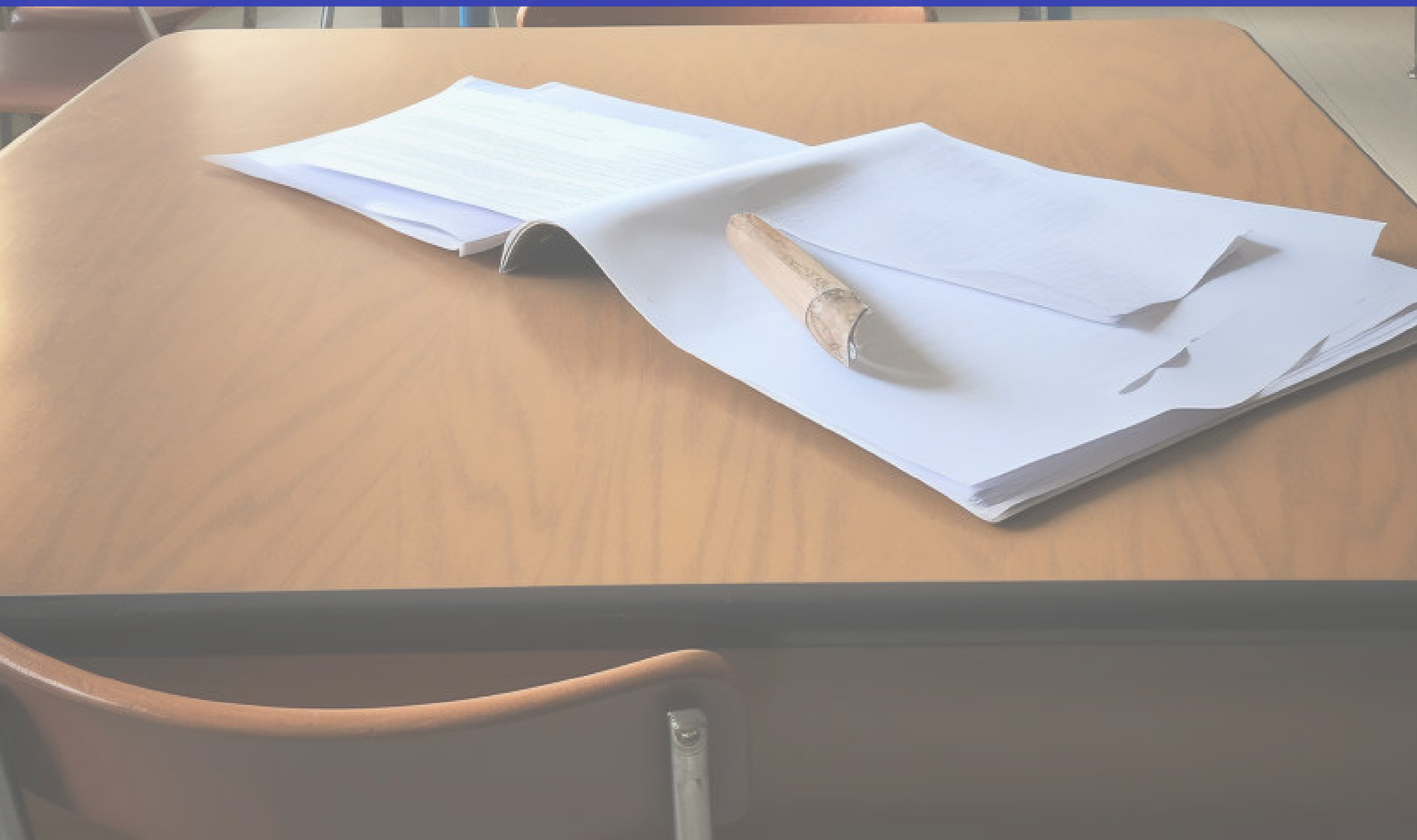
**Created after the success of THINK Global School, THINK Learning Studio was created with a mission to design the conditions for real-world learning in every classroom, school, and community in the world. THINK Learning Studio is dedicated to collaborating with school leaders and educators to create dynamic and innovative educational models.**

**Creating a blueprint for Transformation Learning Zones is the next step in our journey"**

**Russell Cailey (Director of THINK Learning Studio)**



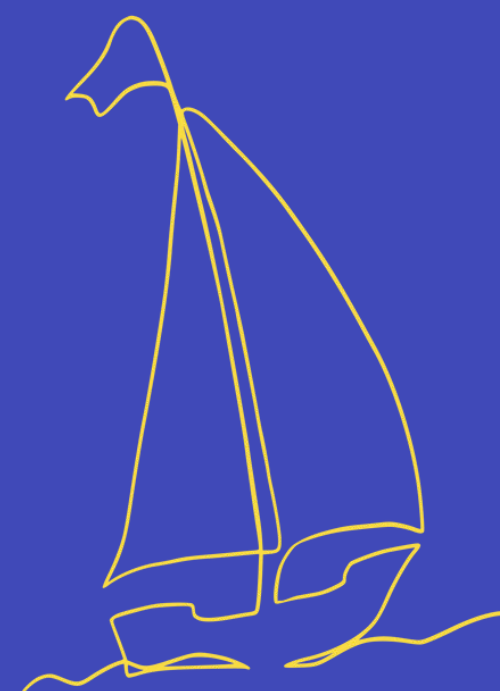
The concept of **Transformative Learning Zones** (TLZ) offers a unique solution to modern challenges, by providing a space for innovation, experimentation, and diverse educational offerings. These zones have the potential to transform the way we approach education, offering students and teachers greater autonomy, access to cutting-edge technology, and the opportunity to learn in a flexible co-constructed and dynamic environment.



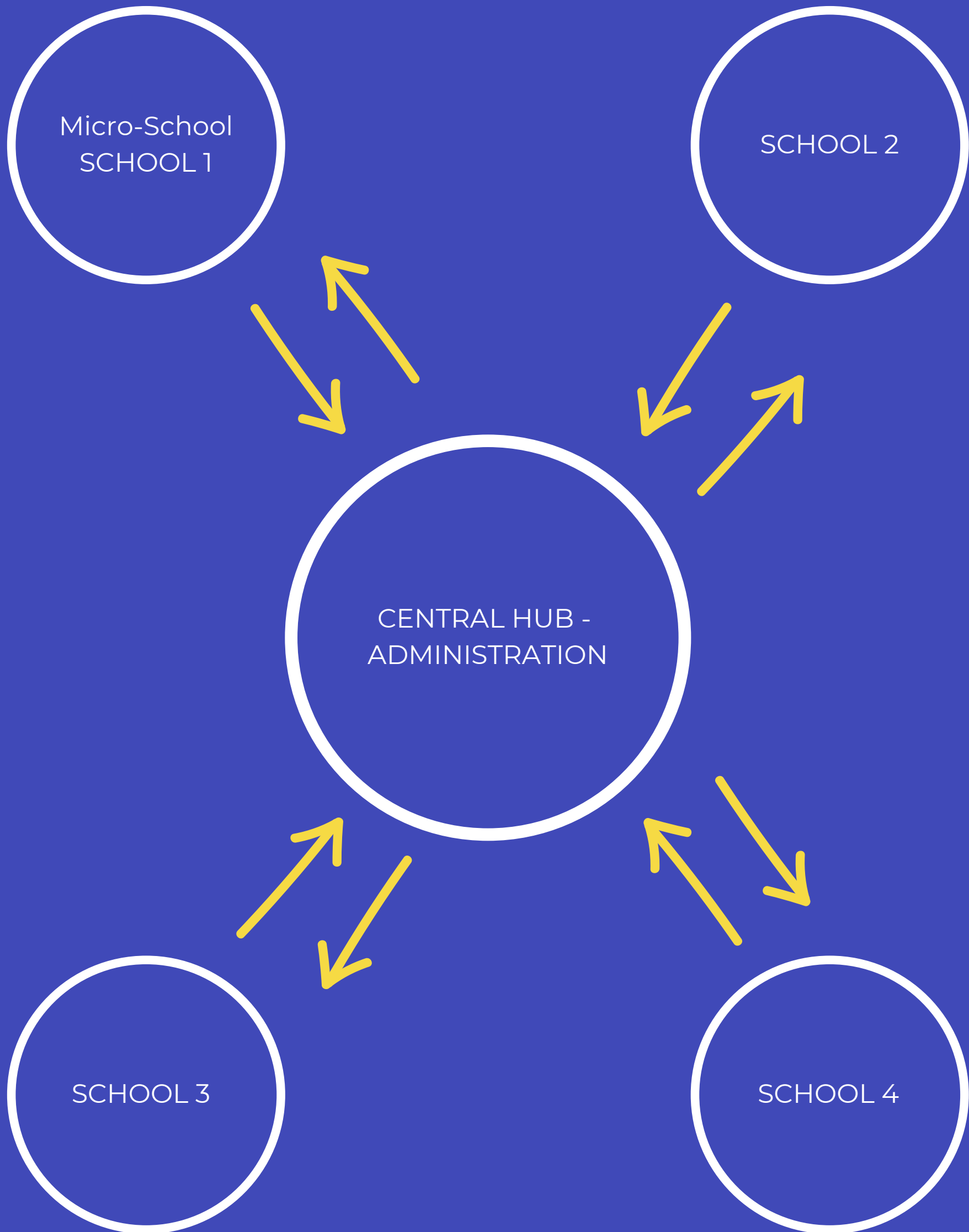
The United Nations' Sustainable Development Goal Four, which aims to ensure inclusive and equitable quality education and promote lifelong learning opportunities for all, highlights the need for innovative approaches to education. This is where the concept of **Transformative Learning Zones** comes into play. Pursuant to this goal, there is a need for new laws and regulations that promote greater flexibility in education and provide students with the ability to learn in ways that are relevant to their lives and future careers.

Transformative Learning Zones are designed to create a hub where different models of education, away from the traditional exam-based system, can thrive. This approach aligns with the spirit of Sustainable Development Goal Four, which recognizes the importance of empowering students to take control of their own learning journeys and to engage in real-world learning experiences that will help them to make a positive impact in the world.

The creation of **Transformative Learning Zones** has the potential to revolutionize the way we approach education and to provide students with the skills and knowledge they need to succeed in a rapidly changing world. As we design our white paper on **Transformative Learning Zones** we hope this is a timely and necessary contribution to the ongoing effort to achieve and create a more equitable and sustainable future for all.



# Transformative Learning Zones



Features - Microcredentials - Students Move Between Hubs (one term commitment) - Sharing Professional development - Teacher Exchanges - Cross School Projects - Dynamic Inspection Framework.

# Priorities for Reform

# REDESIGN AND ACTION

**Encouraging innovation in education:** To foster a dynamic and evolving learning environments, the creation of Transformative Learning Zones should prioritize the development of new and innovative approaches to education., all schools in the Zone should bring something new to the table.

Once accepted it is encouraged, that schools experiment and collaborate and bring new ideas and philosophy to the community.

A new set of guidelines around school accreditation and inspection would be established to allow these schools to thrive outside usual grade-based guidelines.



# CONTROL OVER JOURNEY

Providing students with greater control over their learning journeys: Transformative Learning Zones should provide students with the opportunity to tailor their learning experiences to their individual needs and interests.

This can be achieved through the creation of policies and initiatives that empower students to take control of their own learning journeys and to engage in real-world learning experiences. Student control of their learning in Transformative Learning Zones should aspire to be at around 60% of their curriculum.







# FOSTERING COLLABORATION

Fostering greater collaboration between educators, schools, and communities: To create a vibrant and dynamic learning environment, Transformative Learning Zones should prioritize the development of policies and initiatives that encourage collaboration between educators, schools, and communities.

This can include the creation of networks and partnerships between schools, the implementation of teacher training programs, and the development of new tools and resources that support effective collaboration. From our time at the Hakuba Forum its clear the central area of our Zone would be full of collaboration and exchange of ideas.



# EQUALITY AND ACCESS

**Promoting equity and access to quality education:** Transformative Learning Zones should prioritize the development of policies and initiatives that promote equity and access to quality education for all students, regardless of their background or socioeconomic status.

This can include the implementation of programs that provide support and resources to disadvantaged students, the creation of flexible and inclusive learning environments, and the development of initiatives that address the unique needs of students with disabilities.

"Hubs" can learn from each other.



# Professional Development

**Supporting the professional development of educators:** To ensure that students receive the highest quality education possible, Transformative Learning Zones should prioritize the professional development across "hubs".

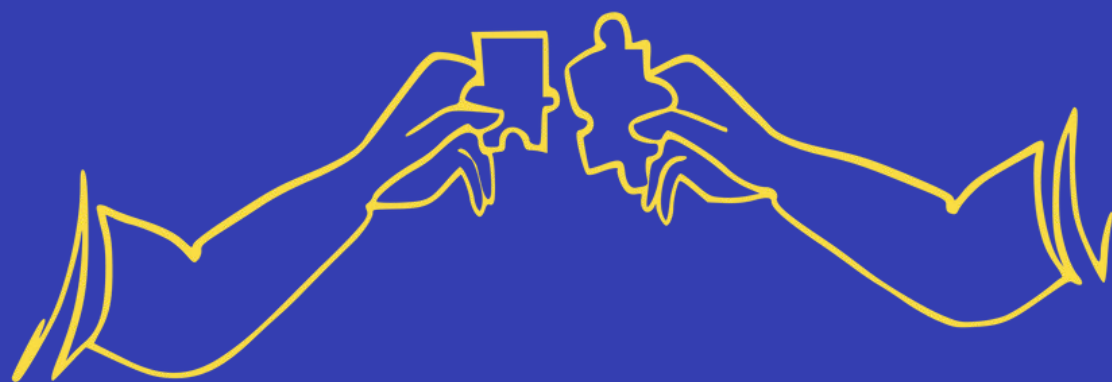
This can include the creation of policies and initiatives that provide ongoing training and support to educators, the development of professional networks and communities, and the implementation of diverse programs that recognize and reward excellence in teaching.

Transformative Learning Zones can create a dynamic and evolving learning environment that is well-equipped to meet the needs of today's students.



**"The best way to predict  
the future is to invent it."**

**Alan Kay**



If you want to know more, contact the team at -  
[studio@thinkglobalschool.org](mailto:studio@thinkglobalschool.org)

and for more general information -  
[www.thinklearningstudio.org](http://www.thinklearningstudio.org)

